

TAKII & CO., LTD.

180 Umekoji -Inokuma, Shimogyo-ku Kyoto, 600-8686 CPO Box 7, Japan

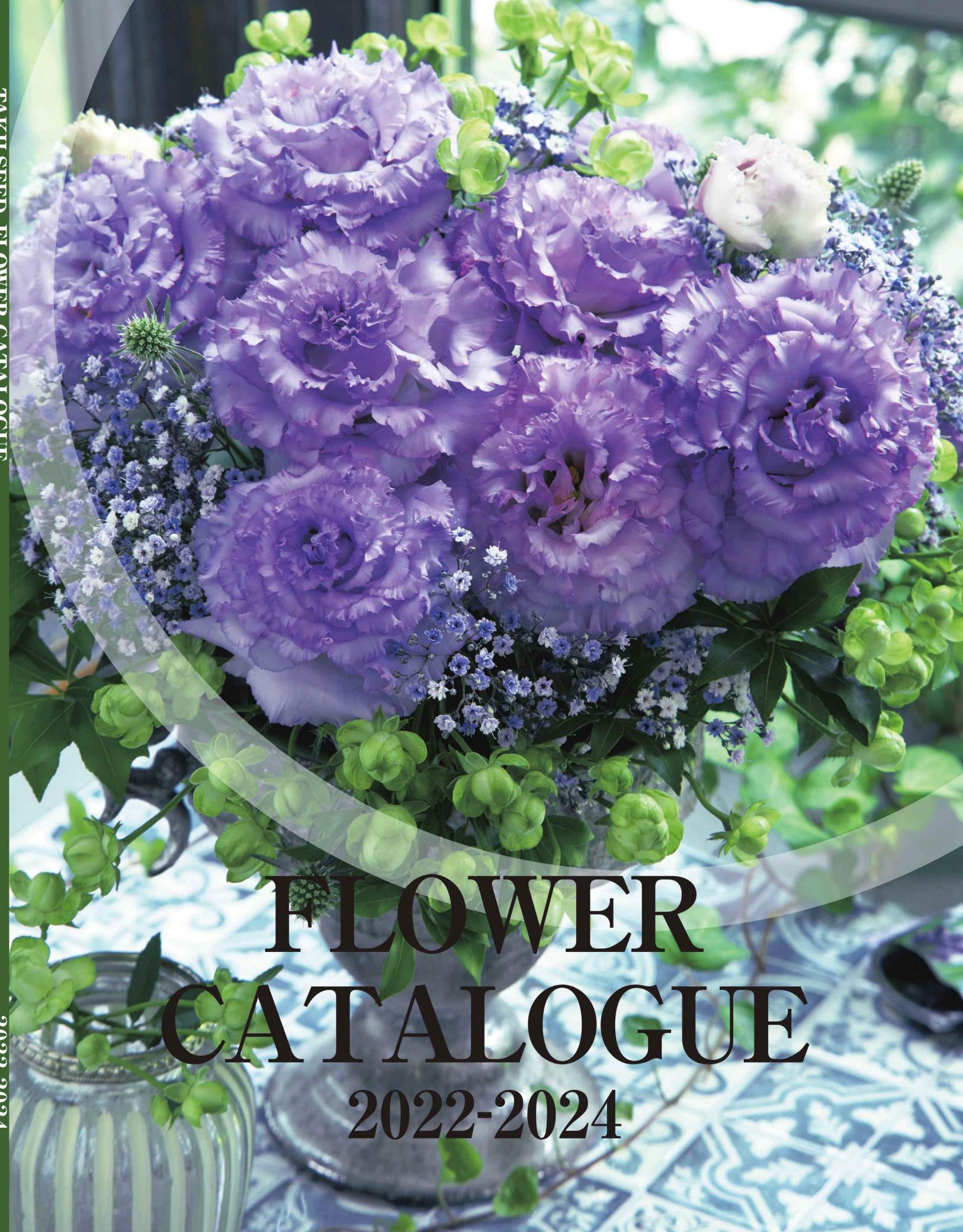
Tel. 81-(0)75-365-0123 Fax. 81-(0)75-365-0110

www.takiiseed.com



TAKII SEED FLOWER CATALOGUE

2022-2024



FLOWER CATALOGUE 2022-2024

TAKII'S WORLD NETWORK



Takii Europe B.V.

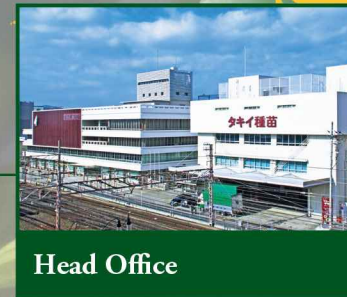


American Takii, Inc.



Qingdao Huang Long Seeds Co., Ltd

T.W.Company Ltd.



Head Office



Takii do Brasil Ltda.



Takii Korea Co., Ltd.

The high quality of Takii's seed products, developed over a long history and experience of over 180 years, are widely recognized not only in Japan but also in many countries around the world. We continue to make every endeavor to improve seed quality in order to meet the highest level of demand.



All-America Selections and Fleuroselect Gold Medal Winners

Takii is a member of both All-America Selections (AAS) and Fleuroselect organizations. It is our great pleasure to present a number of prestigious varieties awarded by AAS and Fleuroselect in this catalogue. Varieties with logos of AAS and/or Fleuroselect are indicators for our recommendation of items for your variety selection.



All-America Selections National Winner

Awarded only to new varieties that perform best in garden performance trials over all of North America



All-America Selections Regional Winner

Awarded only to new varieties that performed particularly well in certain regions in North America



Fleuroselect Gold Medal

Rewards true breeding innovations evaluated through trials of new ornamental varieties at 18 private trial grounds across Europe



Fleuroselect Approved Novelty

New varieties that have been recognized to be sufficiently new and different versus existing cultivars and have passed the rigorous requirement for uniformity



Fleuro Star

Award selected during Flower Trials in the Netherlands and Germany by 30 expert judges from across the industry, choose the winner with the 'wow' effect at point of sale

1978

Dianthus, F1 Carpet Snow Fire

Zinnia, F1 Sun Red

1979

Zinnia, F1 Sun Gold

1982

Dianthus, F1 Telstar Mix

1989

Dianthus, F1 Telstar Crimson

1989

Dianthus, F1 Telstar Picotee

1990

Achillea, F2 Summer Pastels

Celosia, Castle Pink

1992

Canna, Tropical Rose

Salvia, Hummingbird Lady in Red

1999

Osteospermum, Passion Mix

2006

Viola, F1 Floral Power Orange Red Wing

2007

Petunia, F1 Opera Supreme Pink Morn

2011

Brassica, F1 Glamour Red

2011-2012

Salvia, Summer Jewel Red

2012

Salvia, Summer Jewel Pink

Alcea, Spring Celebrities Crimson

2013

Canna, F1 South Pacific Scarlet

2015

Salvia, Summer Jewel White

Verbena, Serenity Pink

Canna, F1 Cannova Bronze Scarlet

2016

Salvia, Summer Jewel Lavender

2017

Petunia, F1 Evening Scentsation

2018

Capsicum, Onyx Red

Canna, F1 South Pacific Orange

2019

Begonia, F1 Fiona Red

2020

Zinnia, F1 Preciosa Orange

2021

Zinnia, Belize Double Rose

Zinnia, Belize Double Orange

2022

Zinnia, Belize Double Scarlet

INDEX

Pot and Bedding

A Achillea millefolium	13	M Matthiola incana (Stock)	32-33
Agastache aurantiaca	14	Melampodium paludosum	34
Alcea rosea	14	O Osteospermum ecklonis	35
Antirrhinum majus (Snapdragon)	15-16	P Pansy (Viola wittrockiana)	35-36
B Begonia semperflorens	16	Petunia hybrida	37-39
Brassica oleracea (Flowering Kale)	17-19	Pharbitis purpurea (Ipomoea)	40
C Calendula officinalis	20	S Salvia coccinea	40-41
Campanula persicifolia	20	Salvia splendens	41
Canna generalis	21-23	Senecio cruentus (Cineraria)	42
Capsicum annuum (Ornamental Pepper)	24	Stipa tenuissima	51
Carex	51	V Verbena x hybrida	42
Celosia cristata	25	Viola cornuta	43-46
Celosia plumosa	25	Z Zinnia elegans	49-50
Chrysanthemum paludosum	26	Zinnia hybrida	47-48
D Dianthus chinensis	28		
Dianthus chinensis x barbatus	27-28		
Dimorphotheca sinuata	26		
E Erysimum sp. (Cheiranthus / Wallflower)	26		
F Festuca glauca	51		
H Helianthus annuus (Sunflower)	29		
L Linaria maroccana	30		
Lisianthus (Eustoma grandiflorum)	31-32		

Cut Flowers

A Antirrhinum majus (Snapdragon)	53-54
B Brassica oleracea (Flowering Kale)	55-58
C Calendula officinalis	58
Callistephus chinensis (Aster)	59-62
Carthamus tinctorius	63
Celosia cristata	63
Consolida spp. (Larkspur)	63
D Delphinium elatum	64
Dianthus hybrida	65
E Eryngium leavenworthii	65
G Gomphrena globosa	65
H Helianthus annuus (Sunflower)	66-70
L Limonium sinuatum (Statice)	69
Lisianthus (Eustoma grandiflorum)	71-78
M Matthiola incana (Stock)	79-80
Z Zinnia elegans	80

Discontinued Item List

Brassica, F1 Coral series
Canna, F1 Cannova Red Shades
Capsicum, Conga
Capsicum, Cubana Mixture
Capsicum, Cubana Multicolor Orange
Capsicum, Favorit mixture
Capsicum, Mambo mixture
Capsicum, Salsa mixture
Capsicum, Uchu Cream Red
Coleus, Giant Exhibition series
Gerbera, F1 Royal Semi-double series
Gerbera, F1 Royal series
Lavandula, Blue River
Linaria, Fantasy Spring Mix
Matthiola, Cinderella Antique
Matthiola, Cinderella Appleblossom
Matthiola, Cinderella Yellow
Pansy, F1 Nature Yellow
Petunia, F1 Trilogy Salmon Morn
Salvia, Sangria
Tanacetum, Carlos and Santana Yellow
Viola, F1 Floral Power Apricot Lip
Viola, F1 Floral Power Deep Blue Blotch
Viola, F1 Four Seasons series
Viola, F1 Gem Lavender Apricot
Viola, F1 Gem Lilac Antique
Viola, F1 Gem Sapphire
Viola, F1 Gem White
Zinnia, Crystal series
Carex, Bronze Curls
Isolepis, Fibre Optics
Juncus, Hedgehog Grass
Juncus, Spiralis
Brassica, Sunrise
Brassica, Sunset
Dianthus, F1 Carousel
Echinacea, Bravado
Gomphocarpus, Hairy Balls
Helianthus, F1 Tiffany
Lisianthus, F1 Arena II Light Pink
Lisianthus, F1 Corelli II Delft Blue
Lisianthus, F1 Corelli III Blue
Lisianthus, F1 Croma III Green
Lisianthus, F1 Croma III Pink Picotee
Lisianthus, F1 Vulcan II Blue Picotee
Matthiola, Glory Cherry
Tanacetum, Virgo

NEW FLOWERS LINE UP

Antirrhinum (Pot)

Page 16 >>



F1 Statement Pink



F1 Statement Rose



F1 Statement Scarlet



F1 Statement White



F1 Statement Yellow



F1 Statement Formula Mixture

Brassica

Page 17 >>



F1 Crystal Deep Red



F1 Crystal Pink



F1 Crystal Red



F1 Crystal Snow

Canna

Page 23 >>



F1 Cannova Scarlet



Eustoma (Pot)

Page 31 >>



F1 Julietta Blue



F1 Julietta Pink



F1 Julietta White

Petunia

Page 37-38 >>



F1 Opera Supreme Rose



F1 Opera Supreme Lemon



F1 Trilogy Silver Blotch



F1 Trilogy Pink Lips

Viola



F1 Floral power Marina



F1 Floral power Purple Pearls



F1 Floral power Plum Antique



F1 Floral power Raspberry



F1 Floral power Yellow Beacon



F1 Floral power Deep Blue



F1 Floral power Deep Orange



F1 Gem Rose



F1 Gem White Imp.



Zinnia



Belize Cherry



Belize Orange



Belize Rose



Belize White



Belize Double Orange



Belize Double Rose



Belize Double Scarlet



Belize Double White



Belize Double Yellow



Belize Double Formula Mixture

Antirrhinum

Page 53 >>



F1 Legend White Imp.



F1 Legend Yellow Imp.

Brassica

Page 55 >>



F1 Crane Ruffle Bicolor



F1 Crane Ruffle Red



F1 Crane Ruffle Rose



F1 Crane Ruffle White



Callistephus

Page 59.61 >>



Nina Plus Purple



Nina Plus Scarlet



Nina Plus White



Optimo Deep Purple



Optimo Red



Optimo α Light Blue

Eustoma (Cut)

Page 71-76.78 >>



F1 Arena III White



F1 Corelli I White



F1 Falda III White



F1 Corelli III Blue Imp.



F1 Croma II Purple



F1 Corelli I Pink



F1 Corelli III Lavender



F1 Corelli III Peach



F1 Corelli Sugoi III Yellow



Pot and Bedding

F2 Flowerburst™ Red Shades

Achillea millefolium
 17-20°C / 63-68°F 3-4 days



- An energizing blend of mainly red, rose and violet shades
- An attractive garden plant. Since it is a hardy perennial, it survives a cold winter and blooms every year unless exposed to extreme hot and humid conditions in summer



FACA02

F2 Summer™ series

Achillea millefolium
 17-20°C / 63-68°F 3-4 days



- Very hardy perennial for the garden, mass plantings in landscapes, pot use and as a cut
- The Summer series loves sunny conditions and will bloom in Summer - Autumn in the first year, earlier in the second year
- Remove old flowers to encourage new blooms



Berries
FACA03



Pastels
FACA04



Arizona™ series

Agastache aurantiaca
 20-22°C / 68-72°F 5-7 days



- Very compact and floriferous, and performs well in containers and landscape
- Foliage has pleasant lemon / mint scent
- Fast crop from spring sowing. Easy maintenance
- Will bloom continuously throughout the season without deadheading
- Maintain pH level at 6.4-7.5 and EC at 1.5-2.0. Agastache will exhibit chlorosis if media pH is below 6.2
- Suitable for dry and sunny location. Agastache will not tolerate wet conditions



Sandstone
FATA22



Sun
FATA23



Sunset
FATA21



Spring Celebrities™ series

Alcea rosea
 15-20°C / 59-68°F 8-10 days



- Double- to semi-double dwarf Hollyhock which has excellent basal branching
- It flowers in the first year and keeps flowering for three months if conditions are favorable
- Carmine Rose and White may have around 15% single flowers. Other varieties may have a small percentage of single flowers



Apricot
FHAA07



Carmine Rose
FHAA02



Crimson
FHAA09



Lemon
FHAA03



Pink
FHAA08



Purple
FHAA05



White
FHAA06



Formula Mixture
FHAA00

Actual colour ratios may vary from image

F1 Palette™ series

Antirrhinum majus

Light required 15-20°C/ 59-68°F 10-12 days



- Vigorous and uniform, Palette blooms early and continues to bloom throughout the season on well-branched plants
- Dwarf plant for pack, pot, mixed container and garden use



Palette will paint your garden with vibrant colours



Bronze FKG507



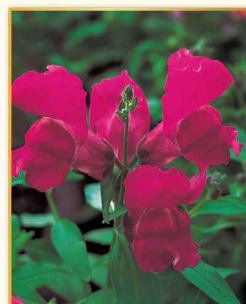
Deep Rose FKG508



Orange FKG504



Orange and White FKG524



Purple FKG506



Purple and White FKG521



Purple Rose FKG512



Red FKG501



Red and White FKG523



Rose Eye FKG514



White FKG509



Yellow FKG516



Formula Mix FKG519

NEW

F1 Statement™ series

Antirrhinum majus

Light required 18-22°C/ 64-72°F 7-12 days



- Great compact plant shape with good basal branching
- It has thicker leaves and large flower compared to other varieties



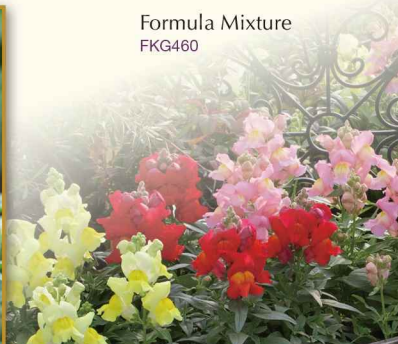
Pink FKG464



Rose FKG463



Scarlet FKG462



Formula Mixture FKG460



White FKG465



Yellow FKG461

F1 Fiona™ series

Begonia semperflorens

Light required 22-24°C/ 72-75°F 15-20 days



- White and Pink are semi-double type Begonia semperflorens with excellent uniformity
- Early flowering habit is same as standard single varieties. Plant habits are also comparable to them
- Fiona Red is awarded 2018 Fleuroselect Gold Medal

Fiona



Pink FBG204



Red FBG202



Rose FBG201



White FBG203

Fringed leaved type

- The edges of all the leaves are finely ruffled
- Fringed-leaved types have better colour development under warm conditions compared to other types

NEW

F1 Crystal™ series

Brassica oleracea

20-25°C / 68-77°F 4-5 days



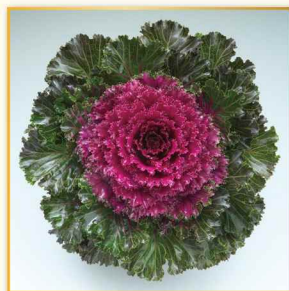
- Our new shiny leaf series
- Pink, Deep Red, and Red are almost same in colouring speed
- Snow is little slow in colouring speed compared to 3 varieties above



Deep Red
FHB757



Pink
FHB758



Red
FHB755



Snow
FHB756



F1 Glamour™ Red

Brassica oleracea

20-25°C / 68-77°F 4-6 days



- First F1 shiny leaf dwarf type brassica introduced in the world
- Grown for its unique shiny leaves which create a dramatic colour contrast



FHB751



F1 Kamome™ series

Brassica oleracea

20-25°C / 68-77°F 4-5 days



- Kamome can withstand frosts and freezes
- One of the few items that can be enjoyed in the winter garden



Pink
FHB573



Red
FHB571



White
FHB572



Round leaved type

- Compact, dwarf plants with uniform, round-shaped, solid heads and slightly waved leaves

F1 Pigeon™ series

Brassica oleracea

20-25°C / 68-77°F 4-5 days



- Pigeon series has a robust habit and is suitable for landscape use



Purple
FHB514



Red
FHB511



Victoria
FHB501



White
FHB512

F1 Song Bird™ series

Brassica oleracea

20-25°C / 68-77°F 4-5 days



- Song Bird series has excellent doubleness with a compact habit
- Available in Pink, Red, and White, 3 colours that bring out the beauty in winter gardens and mixed containers



Pink
FHB533



Red
FHB531



White
FHB532



Feather leaved type

- These varieties are all deeply serrated and have a larger head than other types

F1 Peacock™ series

Brassica oleracea

20-25°C / 68-77°F 4-5 days



- The plants can withstand moderate frosts and freezes and work well in wet conditions as their open feathery leaves are less likely to trap and hold water than fringed- and round-leaved types



Red
FHB621



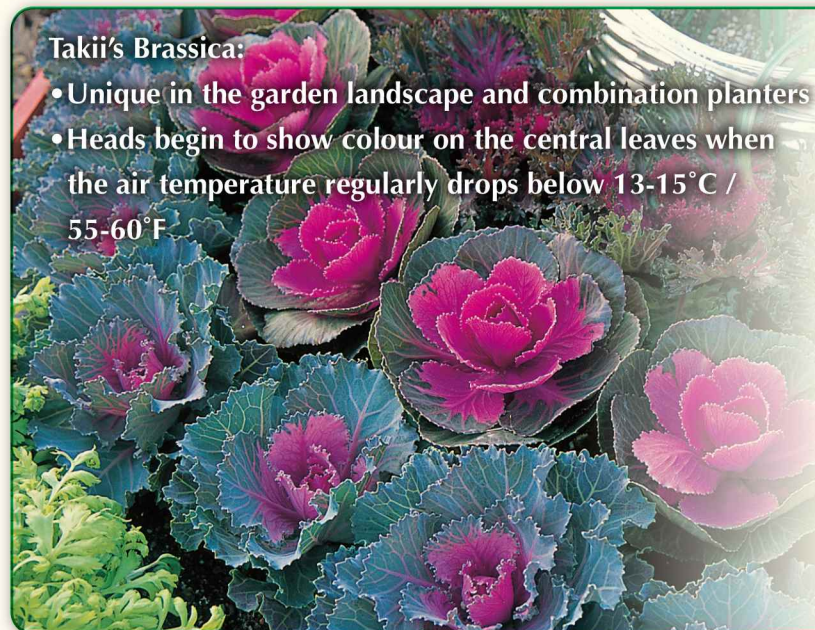
White
FHB622

Takii's Brassica:

- Unique in the garden landscape and combination planters
- Heads begin to show colour on the central leaves when the air temperature regularly drops below 13-15°C / 55-60°F

Variety Comparison among Bedding types

Variety	Diameter of Flower Head	Larger Smaller
Crystal Deep Red	C	A
Crystal Pink	C	B
Crystal Red	C	C
Crystal Snow	C	A
Glamour Red	B	B
Kamome Pink	B	B
Kamome Red	B	B
Kamome White	B	B
Pigeon Purple	B	B
Pigeon Red	B	B
Pigeon Victoria	B	B
Pigeon White	B	B
Song Bird Pink	C	A
Song Bird Red	C	B
Song Bird White	C	C
Peacock Red	A	A
Peacock White	A	B



Zen™ series

Calendula officinalis

Dark required 21-24°C / 70-75°F 8-10 days



- Uniquely compact, bushy plants with double flowers
- Suitable for both pot and bedding use
- Flower size: 7-8 cm/ 3 inches



Gold
FKN321



Orange
FKN322

F1 Takion™ series

Campanula persicifolia

15-20°C / 59-68°F 15-18 days



- Takion has a very good basal branching habit with 6-8 sturdy stems of showy, long-lasting bell-shaped flowers in spring
- Very hardy and survives at least to -10°C/ 14°F
- Makes excellent garden perennial as well as a beautiful pot crop



Blue
FTU521



White
FTU522

Vernalisation Tips for Takion

- * After plants attain mature vegetative growth, they require vernalisation
- * The plants require about one month of temperatures below 8°C/46°F They endure light frost
- * After vernalisation, heating at 10-15°C/50-60°F accelerates the flowering by approximately one month
- * The advantage of Takion is that it grows faster and comes into flower in a shorter period of time Sow the seed in the autumn, it will flower in the spring



Tropical™ series

Canna generalis

Temp. fluctuation is preferable ■ 20-30°C/ 68-86°F ■ 10-15 days



- Canna Tropical series is a seed product and is extra dwarf
- Production period is fast and plants are characterized by readily producing offsets, making full finished pots with tremendous consumer appeal
- Tropical White produces flowers with or without pink spots, with the flowers on individual plants exhibiting the same degree of spotting
- Prefers warm and humid conditions over 25°C/ 77°F



It is possible to have a water garden with canna Tropical



Bronze Scarlet
FCA211



Red
FCA121



Rose
FCA122



Salmon
FCA124



White
FCA127



Yellow
FCA126

Tropical Bronze Scarlet, released in 2010, is the first bronze leaved Canna from seed



F1 South Pacific™ series

Canna generalis

■ 20-30°C/ 68-86°F ■ 10-15 days



- The first F1 Canna series from seed
- Better uniformity at its early stage of germination compared with our existing variety, Tropical series
- Good basal branching
- Scarlet and Orange earned AAS awards
- Being from seed, the South Pacific series is not prone to diseases often transmitted in rhizome propagation
- The vibrant colours of the large flowers creates a dramatic and tropical feel
- Use this striking beauty in planters, mixed containers, gardens, landscapes and in shallow areas of water features



Ivory
FCA403



Orange
FCA404



Rose
FCA402



Scarlet
FCA401



F1 Cannova series

Canna generalis

20-30°C / 68-86°F 10-15 days



- Cannova can be grown at lower temperature
- High degree of uniformity and high percentage of saleable plants
- Early flowering, can also be grown in smaller pot size
- Good branching habit and excellent leaf quality
- An attractive and broad range of bright colours on green or bronze leaved plants



Bronze Orange
FCAA33



Bronze Scarlet
FCAA35



Lemon
FCAA15



Mango
FCAA10



Orange Shades
FCAA17



Rose
FCAA05



Scarlet
FCAA37



Yellow
FCAA02



Cubana™ Multicolor Red

Capsicum annuum

20-22°C / 68-72°F 5-7 days



- Excellent large fruit on top of vigorous plant
- Oval type of fruit with five colours can be used in various combinations in mixed containers and pots



FTGG97



Onyx™ Red

Capsicum annuum

20-22°C / 68-72°F 5-7 days



- 2017 AAS award winner
- An unprecedented compact, black-leaved capsicum
- Compact, well-branched plant habit with eye catching dark black foliage
- Ball-shaped fruit matures from black to red



FTG161



Onyx Red's young fruit is glossy black. The combination of black fruit and black foliage makes a very stylish impression.

Onyx Red

Armor™ series

Celosia cristata

Dark required 🟢 20-25°C / 68-77°F 🟡 8-10 days



- Attractive large flower heads in bright colours on robust plants with lush foliage
- Ideal item for hot summer gardens as well as pot use
- Yellow is relatively compact in the series



Orange
FKT242

Purple
FKT245

Red
FKT241

Yellow
FKT243

Mix
FKT249

Castle™ series

Celosia plumosa

Dark required 🟢 20-25°C / 68-77°F 🟡 8-10 days



Orange
FKT265

Pink
FKT267



Scarlet
FKT266

Yellow
FKT268

Mix
FKT269

- Castle is semi-dwarf in height, vigorous and has a self-branching habit
- The long-lasting flowers easily withstand summer heat and drought
- Excellent for landscaping, containers and gardens

Castle can be enjoyed in pot by multiple sowing



Snowland™

Chrysanthemum paludosum

🟢 15-20°C / 59-68°F 🟡 5-10 days



- Snowland has profuse clear white daisy-like flowers with yellow disks
- This variety has a uniform plant habit with large flowers that are bigger than other paludosum type Chrysanthemums
- Under warm temperatures and long-day conditions they produce many flowers, under cool temperatures and short-day conditions, they produce many branches



FCR127

Spring Flash™ series

Dimorphotheca sinuata

🟢 15-20°C / 59-68°F 🟡 8-10 days



- Spring Flash provides bright colour for the early spring garden
- Excellent for containers, it can also be used for landscaping



Orange
FZZ624



Yellow
FZZ621

Charity™ Mix

Erysimum sp.

🟢 18-22°C / 64-72°F 🟡 8-10 days



- Charity is a very unique wallflower that blooms in both autumn and spring
- Flowers can withstand frosts as low as -4°C / 26°F with no damage, and plants can overwinter in mild climates
- Day-length neutral and no vernalisation required for blooming
- The compact plants are excellent for pots and garden use and its sweet fragrance greatly adds to consumer appeal



FZZ729

Wallflower
ERYSIMUM
CHARITY SERIES

F1 Telstar™ series

Dianthus chinensis x barbatus

21-24°C / 70-75°F 5-6 days



- Telstar is floriferous with excellent pack and garden performance, and also recommended for bedding and landscaping use
- The series produces vibrant flowers on well-branched plants
- Telstar was developed to have a high degree of resistance to Phytophthora and other damp-off pathogens, and is also resistant to both heat and frost
- Telstar White may have some pinkish flowered plants depending on climate conditions



Burgundy
FND578



Carmine Rose
FND564



Coral
FND563



Crimson
FND531



Picotee
FND534



Pink
FND536



Purple
FND538



Purple Picotee
FND535



Salmon
FND565



Scarlet
FND532



White
FND533



Mix
FND539



F1 Carpet™ series

Dianthus chinensis

21-24°C / 70-75°F 5-6 days



- Carpet earns its name by forming a carpet of large flowers on heavily branched plants
- It is a compact series excellent for pot and bedding production



Mix
FSK529



Big Smile™

Helianthus annuus
20-25°C/ 68-77°F 3-4 days

15-50 cm
6-20 inches
(Plant size varies according to pot sizes)

- Big Smile is a dwarf OP variety
- Ideal for spring to summer production, but can also be used for production any time of year with sufficient temperature
- Big Smile is suitable for pots and containers, good for impulse sales at retail
- It blooms in 50-55 days



FHM313

F1 Smiley™

Helianthus annuus
20-25°C/ 68-77°F 3-4 days

15-50 cm
6-20 inches
(Plant size varies according to pot sizes)

- F1 hybrid pollenless dwarf Helianthus
- Smiley was named with our hope of spreading happiness and smile with exuberant flowers
- Improvement of Sunny Smile, high uniformity and more branching
- Regarding day length, it flowers all year round in about 55 to 60 days when grown temperatures above 15°C/ 60°F



FHM413

Fantasisita™ series

Linaria maroccana
20-21°C/ 68-70°F 15-20 days 9,500-17,000 sd/g

8-12 cm
3-5 inches

- All varieties of Fantasisita are bred to be extra dwarf, good basal branching and extra early maturity
- The crop grows year-round in cool, mild areas
- Will withstand frosts and short duration freezes to -4°C / 26°F without injury
- It is especially suitable for mass plantings and is often used in hanging baskets and mixed containers to provide bright colour accents



Blue
FLN133 (raw)
FLN143 (multi pelleted)



Pink
FLN132 (raw)
FLN142 (multi pelleted)



Rose
FLN131 (raw)
FLN141 (multi pelleted)



White
FLN135 (raw)
FLN145 (multi pelleted)



Yellow
FLN134 (raw)
FLN144 (multi pelleted)



F1 Carmen™ series

Eustoma grandiflorum

Light required ■ 15-20°C/ 59-68°F ■ 20-25 days



- Excellent pot Lisianthus bred especially for its high quality root system
- It has more disease resistance against damping off from soil bacteria such as Fusarium
- Carmen produces many medium sized, long lasting flowers



Blue
FRSG01

Blue Rim
FRS153
(Formerly FRSG05)

Ivory
FRS155
(Formerly FRSG07)

Lilac
FRS152
(Formerly FRSG04)

Rose
FRS154
(Formerly FRSG06)

NEW

F1 Julietta™ series

Eustoma grandiflorum

■ 15-20°C/ 59-68°F ■ 20-25 days



- It has great compactness and flower earliness compared to other pot lisianthus
- It has double flower and fringed petals



Blue
FRS178



Pink
FRS177



White
FRS176



F1 Rosie™ series

Eustoma grandiflorum

Light required ■ 15-20°C/ 59-68°F ■ 20-25 days



- Rosie produces very attractive fully double, long lasting flowers
- Genetically dwarf pot Lisianthus with improved root quality



Lavender Blue
FRS171
(Formerly FRSG21)

Pink
FRS175
(Formerly FRSG25)

Rose Picotee
FRS172
(Formerly FRSG22)

White
FRS173
(Formerly FRSG23)

Lilac
FRS174
(Formerly FRSG24)



Harmony™ series

Matthiola incana

Dark required ■ 18-21°C/ 64-70°F ■ 4-5 days



Selectable type

- Seedlings are selectable for doubleness

- Uniform, dwarf, branching series with excellent fragrance
- Harmony has approximately 50% doubles and is selectable for doubleness by the cotyledon (**See the below**)
- Good for cool season production in pots or containers



Cherry Blossom
FST713



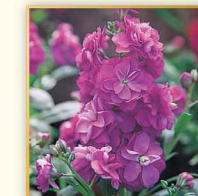
Cream Yellow
FST727



Deep Rose
FST721



Light Rose
FST718



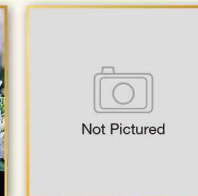
Purple
FST714



Violet
FST722



White
FST723



Mix
FST720

Selection tip for double flowered seedlings

Series	Page	Timing of Selection	Selection Method	
Harmony	32	A pair of cotyledons	Double: Lighter green Larger leaves Grow faster (Taller)	
Xmas	79			Single: Darker green Smaller leaves Grow slower (Shorter)
Glory	79			
Cinderella	33	Cotyledons and true leaves	Select by colour of leaves. Can be put in cold strage of 8°C/46°F for 2-3 days in cotyledon stage, then colour difference will be more clearly	
Canneto	80	Not needed	Double: Lighter green Larger leaves Single: Darker green Smaller leaves	
Noble	80			
Average of 90% double-flowering type				

The above data is based on trials completed in Japan. Actual results are dependent upon environmental conditions and local practices that may affect variety characteristics and performance.

Cinderella™ series

Matthiola incana

Dark required 18-20°C/ 64-68°F 3-5 days



Selectable type

- Seedlings are selectable for doubleness

- Dwarf selectable Matthiola with hairy leaves
- The double flower plant ratio of Red and White is less than the remaining colours in the series
- Seedlings are easily selectable for doubleness after they are exposed to cold temperatures below 8°C/ 46°F with light. Double flower seedlings will show pale green cotyledons and single flower seedlings will show dark green cotyledons (See page 32)



Blue
FSTA03



Hot Pink
FSTA05



Lavender
FSTA06



Pink
FSTA07



Purple
FSTA08

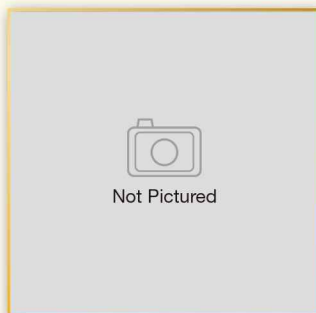


Red
FSTA09



White
FSTA12

[EVE]



Vivid Formula Mixture
FSTA00



Jackpot Gold™

Melampodium paludosum

Temp. fluctuation is preferable 20-30°C/ 68-86°F 8-10 days



- Improvement of Million Gold with larger flowers and round shaped leaves
- Vigorous plant habit and more floriferous than Million Gold
- Self-cleaning habit, new flowers cover the old flowers so plant continues to have fresh flowers showing all season long
- Blooms continuously until first frost
- Blooms in 80 to 95 days from sowing
- These dwarf varieties are excellent for packs, 10 cm / 4 inches pots, and for landscapes



FML125



Lemon Delight™

Melampodium paludosum

Temp. fluctuation is preferable 20-30°C/ 68-86°F 8-10 days



- Bright yellow flowers make a good combination with Jackpot Gold in the garden
- Blooms continuously until first frost
- Blooms in 80 to 95 days from sowing
- These dwarf varieties are excellent for packs, 10 cm/ 4 inches pots, and for landscapes



FML133

Passion™ series

Osteospermum ecklonis
■ 18-22°C/ 64-72°F ■ 8-10 days

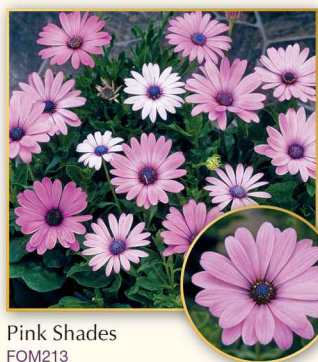


- Heavily-branched, compact and bushy variety which does not need pinching
- Passion Mix has been switched to Passion Formula Mix (set percentages of each colour)
- Unlike the vegetative varieties, seed-raised Passion series retains its compact habit very well
- They grow and flower almost year-round in mild areas, with the heaviest blooming period in early spring through early summer
- Plants are well adapted to container culture such as colour bowls and combination planters

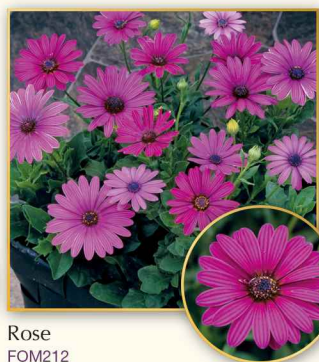


Formula Mix FOM301

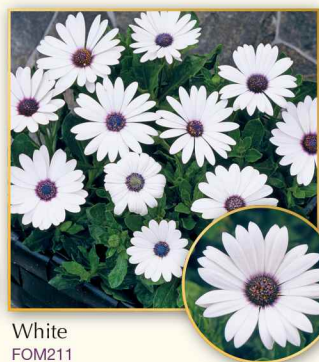
Passion Formula Mix is everybody's favorite



Pink Shades FOM213



Rose FOM212



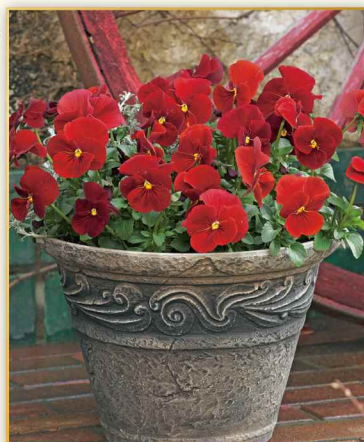
White FOM211

F1 Clean Scarlet™

Viola wittrockiana
■ 18-20°C/ 64-68°F ■ 7-13 days



- Clean Scarlet is among the brightest of the scarlet coloured Pansies
- It is excellent for bedding and container use



FPA619

F1 Imperial™ Antique Shades

Viola wittrockiana
■ 18-20°C/ 64-68°F ■ 7-13 days



- Suitable for pots and packs as well as mixed container production
- Imperial Antique Shades shows various colour ranges



FPA550

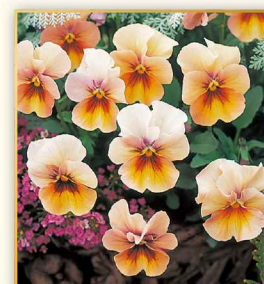
F1 Nature™ series

Viola wittrockiana
■ 18-20°C/ 64-68°F ■ 7-13 days



Nature™

- A breakthrough in breeding, a true multiflora pansy and viola cross with flowers that completely cover the plants
- Compact, very strong plants, very vigorous and extra floriferous
- Wide colour range including many unique colours, excellent for both spring and fall sales
- Strong landscape performer – fast rebound from rain and freezes, outstanding winter survivability
- "A Landscaper's Dream" – perfect for mass plantings and mixed containers as well as for pots and packs



Antique Shades FPA737



Beacon FPA742



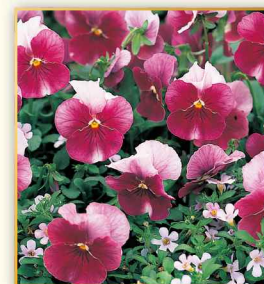
Blue and Yellow FPA735



Clear Yellow FPA744



Frosty Blue FPA743



Frosty Rose FPA736



Lemon Yellow FPA732



Mulberry Shades FPA740



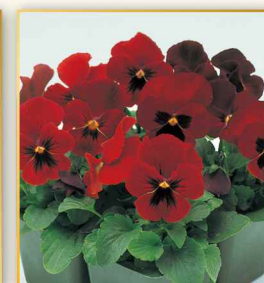
Ocean FPA726



Orange FPA748



Plum Purple FPA739



Red with Blotch FPA731



Rose Picotee FPA747



Rose Pink FPA738



Rose with Blotch FPA722



White FPA724



Yellow with Blotch FPA749



Formula Mixture FPA729

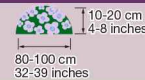
Any landscape pattern is possible with Nature
 Many colour assortment of Nature attract gardeners



F1 Opera Supreme™ series

Petunia hybrida

Light required 22-25°C/ 72-77°F 5-10 days



Trailing type

- Opera Supreme has a very floriferous habit, less day length sensitivity, and a low, spreading habit that are key characteristics preferred for trailing petunias
- Its flowers have a very attractive iridescent quality, or sheen, and are borne in great profusion from the centre to the tips on the spreading plants
- Outstanding in garden beds, window boxes, combination pots and hanging baskets
- Red has a more vigorous plant habit than other trailing petunias in the red colour segment
- Opera Supreme White may have some pinkish flowered plants depending on climate condition



Blue
FPT629



Lavender
FPT627



Lemon
FPT619



Lilac Ice
FPT632



Pink Morn
FPT633



Its excellent spreading habit is suitable for hanging baskets



F1 Opera Supreme provides season-long colour to city landscapes



Purple
FPT631



Purple Vein
FPT620



Raspberry Ice
FPT638



Red
FPT637



Rose
FPT618



White
FPT626

F1 Trilogy™ series

Petunia hybrida

Light required 22-25°C/ 72-77°F 5-10 days



Mounding type

- The plant is a mounding type with a good branching habit, while keeping a tidy, compact habit
- Strong flower petals stand up to humid conditions
- Reaching a height of about 15-25 cm / 6-10 inches, and a width of 50-60 cm / 20-24 inches when fully mature, Trilogy is a fabulous landscape and container performer
- Series requires less PGR use, adapts to any protocol



Blue
FPT648



Lavender Pink
FPT650



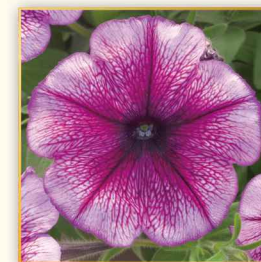
Lime
FPT662



Pink Lips
FPT664



Purple
FPT646



Purple Vein
FPT663



Rose
FPT643



Scarlet
FPT645



Silver Blotch
FPT665



White
FPT641



Trilogy
PETUNIA

has advantages for

- Growers :**
No special technique, adapts to your protocol
- Retailers :**
Long shelf life, no more tangling
- Consumers :**
Minimal care, maximum performance all season

Pot and Bedding

F1 Evening Scentsation™

Petunia hybrida

Light required ■ 22-25°C / 72-77°F ■ 5-10 days

15-25 cm
6-10 inches
80-90 cm
32-35 inches

Trailing type

- Evening Scentsation is the first petunia which earned an AAS regional award for its lovely fragrance and stunning colour
- Evening Scentsation's fragrance has notes of hyacinth, sweet honey and rose
- As its name implies, Evening Scentsation's fragrance is stronger in the evening hours, and can be experienced throughout the day as well
(Scent is perceived differently by each individual)



FPT639



The basic fragrance of Evening Scentsation is derived from phenylacetaldehyde, which has a hyacinth-like scent, 2-phenylethanol, which has a rose-like scent, and methyl benzoate, which has a dry fruit-like scent. The largest release of scent compounds by Evening Scentsation occurs during the switch from light periods to dark periods. The article of characteristic of floral scent compounds in Evening Scentsation was published in The Horticulture Journal. https://www.jstage.jst.go.jp/article/hortj/advpub/0/advpub_OKD-090/_article/-char/en



Taki's Petunia characteristics by series

Series	F1 Trilogy	F1 Evening Scentsation	F1 Opera Supreme
	Multiflora		
Type	Mounding	Trailing	
Flower size	6.5-7.5 cm / 2.6-3.0 inches	7 cm / 2.7 inches	6.5-7.5 cm / 2.6-3.0 inches
Plant habit in pot (10 cm / 4 inches)			
Height at maturity	15-25 cm / 6-10 inches	15-25 cm / 6-10 inches	10-20 cm / 4-8 inches
Width at maturity	50-60 cm / 20-24 inches	80-90 cm / 32-35 inches	80-100 cm / 32-39 inches
Plant habit in garden			

The above data is based on trials completed in Japan. Actual results are dependent upon environmental conditions and local practices that may affect variety characteristics and performance.

■ Germination Temperature ■ Days to Emergence ■ Plant Height

Cameo Elegance™

Pharbitis purpurea (Ipomoea purpurea)

■ 20-30°C / 68-86°F ■ 4-5 days

up to 300 cm
up to 118 inches

- Variegated foliage with flowers of rose-red with white throats make Cameo Elegance a novelty item
- It blooms most prolifically under short-day conditions
- Excellent packet seed item due to ease of culture
- The plant can be used in many different styles, such as trailing pot, landscape ground cover, hanging basket and climbing vine



FAA451 Trailing vines add dimension to containers

Summer Jewel™ series

Salvia coccinea

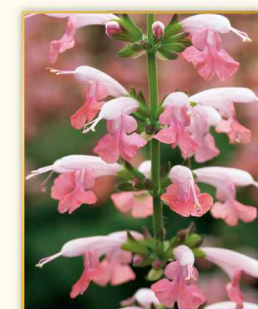
■ 20-25°C / 68-77°F ■ 5-10 days

35-50 cm
14-20 inches

- Amazing performance, blooms heavily all summer
- Excellent branching habit produces a multitude of flower spikes
- Vivid flowers attract hummingbirds
- Significantly earlier than other existing varieties under long day conditions
- All colours of Summer Jewel series are awarded by All-America Selections



Lavender
FSR304



Pink
FSR302



Red
FSR301



White
FSR303



Hummingbird™ series

Salvia coccinea

20-25°C/ 68-77°F 5-10 days



- Extremely long blooming time attracts consumers
- Well branched plants with brilliant flowers appear about 11 weeks from sowing
- Can be used for bedding, planters, baskets, pots and borders



Coral Nymph
FSRA11



Forest Fire
FSRA13



Lady in Red
FSRA12



Snow Nymph
FSRA14

Fizz™ series

Salvia splendens

20-25°C/ 68-77°F 5-10 days



- Fizz series is early to flower with densely packed flower columns which give each plant a strong show of colour
- Flowers are long lasting at consumer level as well as a long shelf-life at retail
- The branching habit gives a fullness to the plant and the flower colour contrast to the dark foliage gives a better colour show in the landscape



Cream
FSR275



Grape
FSR274



Peach
FSR272



Raspberry
FSR273



Strawberry
FSR271

Early Perfection™ series

Senecio cruentus

Light required 20-24°C/ 68-75°F 10-14 days



- Produces a beautiful display of colourful daisy-like flowers
- Dwarf, compact plants that are suitable for pot use



Blue
FSN313



Pink
FSN312



Purple
FSN315



Red
FSN311



Rose
FSN317



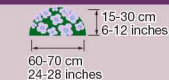
Mix
FSN310

<Disclaimer> Genetically few percentages of pink color may appear

Serenity™ series

Verbena x hybrida

20-30°C/ 68-86°F 15-20 days



- Serenity Mix is an excellent mix of pastel lavenders, white, carmine red to pink
- Its deeply-cut fern-like foliage is dark forest green
- In cool climates it will stay dwarf, producing a carpet
- In warmer areas the Serenity series will be a perennial



Pink
FBB231



Mix
FBB210



F1 Floral Power® series

Viola cornuta

🌱 18-20°C / 64-68°F 🕒 7-15 days



- Mound type viola which produces an abundance of round-shaped, thick petaled flowers on compact yet vigorous plant
- Excellent for early spring sales



Blue Picotee
FBRE07



Cream Yellow Lip
FBRA20



NEW
Deep Blue
FBRE16



NEW
Deep Orange
FBRE18



Golden Blues
FBRA10



Indian Sunset
FBRE12



Jolly Face
FBRE05



Lavender Blue
FBRA24



Lavender Pink
FBRE03



Lilac Purple Wing
FBRE09



NEW
Marina
FBRE08



Orange Red Wing
FBRA05



Persian Pink
FBRE06



Pink with Lemon Lip
FBRA19



NEW
Plum Antique
FBRE20



Purple Face
FBRA35



NEW
Purple Pearls
FBRE19



Purple Rose White Face
FBRA07



NEW
Raspberry
FBRE15



Red
FBRA31



Rose Wing
FBRA27



White
FBRE14



NEW
Yellow Beacon
FBRE11



Yellow Blotch
FBRE04



Yellow Purple Wing
FBRA28



Yellow Red Wing
FBRE13



Yellow Surprise
FBRE00



F1 Gem™ series

Viola cornuta

🌱 18-20°C/ 64-68°F 🕒 7-15 days



- The wide and unique colour assortment of this series provides a complete range both for consumers as well as professional landscapers
- The Gem series has strong over-wintering ability as well as exceptional heat tolerance
- Gem is excellent for colour bowls, containers, pots, hanging baskets, and landscapes



Apricot Antique
FBR537



Aztec
FBR573



Beacon
FBR561



Clear Ocean
FBR540



Electric Blue
FBR575



Fire
FBR572



Frosty Blue
FBR567



Heavenly Blue
FBR568



Lavender Antique
FBR538



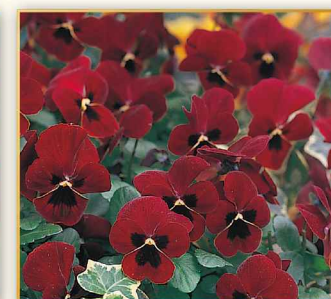
Orange
FBR535



Pink Antique
FBR536



Plum Antique
FBR555



Red with Blotch
FBR531



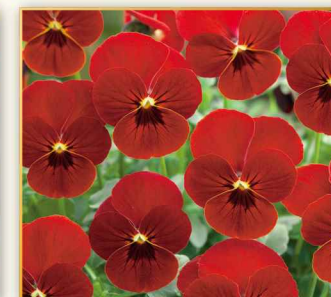
Rose
FBR546



Rose Antique
FBR578



Rose with Blotch
FBR532



Scarlet
FBR569



White Imp.
FBR544



Yellow
FBR571



NEW *Belize™ series*
Zinnia hybrida
 20-25°C / 68-77°F 5-6 days

- Takii's new interspecific Zinnia, it has excellent compactness and heat tolerance
- Belize series have floriferous and early flowering
- It has long shelf life which you can enjoy flower for a long time in your garden



Cherry
FZN734



Orange
FZN733



Rose
FZN731



White
FZN732

<Disclaimer>
Genetically, tall plants (off-type) may appear



NEW *Belize Double™ series*
Zinnia hybrida
 20-25°C / 68-77°F 5-6 days

- Double type interspecific Zinnia
- Main characteristics are same as Belize series
- From its colour wise you can use Belize Double to make your garden more colorful and gorgeous
- Belize Double Scarlet has won the Gold Medal of Fleuroselect
- Belize Double Rose and Orange has earned Fleuroselect Novelty



Orange
FZN744



Rose
FZN741



Scarlet
FZN745



White
FZN742



Yellow
FZN743



Formula Mixture
FZN740

<Disclaimer>
Genetically, tall plants (off-type) may appear



F1 Preciosa™ series

Zinnia elegans

20-22°C / 68-72°F 5-6 days 120-150 sd/g



- Preciosa series has outstanding vivid colour and voluminous flowers with compact habit
- More compact and well-branched plants produce lavish amounts of higher doubleness, muy atractivo!

<Disclaimer>

Individual plants may exhibit differences of colour, doubleness and plant height



Light Yellow
FZN552 (raw)
FZN582 (slick coated)



Orange
FZN557 (raw)
FZN587 (slick coated)



Pink
FZN554 (raw)
FZN584 (slick coated)



Red
FZN558 (raw)
FZN588 (slick coated)



Rose
FZN555 (raw)
FZN585 (slick coated)



Scarlet
FZN553 (raw)
FZN583 (slick coated)



White
FZN556 (raw)
FZN586 (slick coated)



Yellow
FZN551 (raw)
FZN581 (slick coated)



Premium Mix
FZN561 (raw)
FZN580 (slick coated)



F1 Dreamland™ series

Zinnia elegans

20-22°C / 68-72°F 5-6 days 100-200 sd/g



- Takii's Dreamland is an early, large dahlia-flowered type providing a great colour show both in containers and in the garden

- Excellent choice for pot and pack sales, with great consumer appeal

<Disclaimer>

Individual plants may exhibit differences of colour, doubleness and plant height



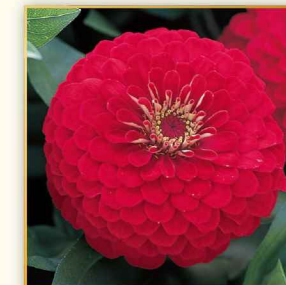
Coral
FZN625



Ivory
FZN626



Pink
FZN623



Red
FZN628



Rose
FZN627



Scarlet
FZN621



Yellow
FZN624



Mix
FZN629



Grasses, Sedges and Rushes

Natural Look

collection



Auburn
Carex flagellifera
(Weeping Brown Sedge)

FGRA04



Frosted Curls
Carex
(New Zealand Hair Sedge)

FGRA02



Elijah Blue
Festuca glauca
(Blue Fescue)

FGRA18



Angel Hair
Stipa tenuissima
(Esparto Grass)

FGRA12

- Use as landscape, garden or pot plant
- Easy to produce, high ornamental value
- Energy saving program
- Heat tolerant, low maintenance
- Develop your own grass assortment or combine with colour items
- Long shelf life = Long sales window

Genus	Species	Variety name	Germ Info	Germination Temperature		Days to Emergence	Plant Height		Remark
				°C	°F		cm	inch	
Carex	flagellifera	Auburn	Light required	18-22	64-72	25-35	35	14	● Bronze-red leaves
Carex	—	Frosted Curls	Light required	18-22	64-72	12-20	25	10	● Very hardy ornamental grass which can be used for mixed containers and landscapes ● 5-6 months from sowing to sell, but can be shortened with multiple sowing
Festuca	glauca	Elijah Blue	Light required	18-20	59-68	7-14	25	10	● Extremely hardy perennial, it is one of the most important landscaping grasses ● Prefers full sun and well drained conditions ● Multiple sowing will shorten the growing time to finishing
Stipa	tenuissima	Angel Hair	Light required	18-20	59-68	7-10	70	28	● Thread-like, shiny light green leaves give a silky and elegant appearance ● It can be used in various ways such as for mixed containers and rock gardens as well as dried cut flowers



Cut Flowers



F1 Legend™ series

Antirrhinum majus

Light required 15-20°C / 59-68°F 10-12 days



- Sturdy stems and strong flower petals for good cut flower transportation and vase life
- Dense flower spikes and intense colours make an impressive accent in flower arrangements

Legend series

- Light Pink is slightly shorter (95 cm / 37 inches) height than other colours (100-130 cm / 39-51 inches)

Legend Imp. series

- It has longer spike than the existing variety
- Plant height is little taller than previous variety
- Flowering speed is almost the same or slightly earlier



Light Pink
FKG604



Light Yellow
FKG605



Pink
FKG603



White
FKG602



White Imp.
FKG606



Yellow
FKG601



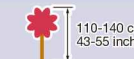
Yellow Imp.
FKG607



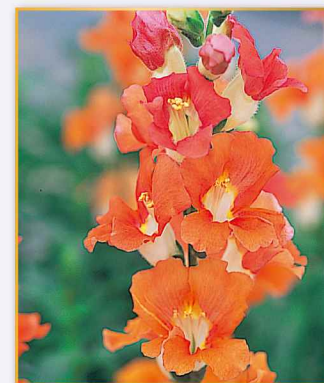
F1 Chantilly™ series

Antirrhinum majus

Light required 15-20°C / 59-68°F 10-12 days



- Takii's open-faced Antirrhinum Chantilly has large flowers with an overall gorgeous impression
- Unique Snapdragon for short day and low temperature conditions



Bronze
FKG574



Cream Yellow
FKG572



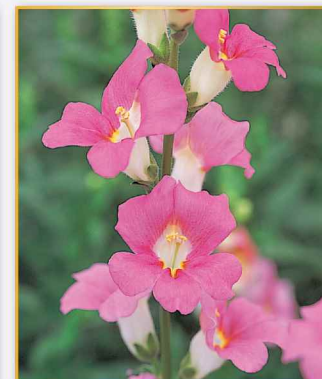
Deep Orange
FKG587



Light Pink
FKG578



Light Salmon
FKG575



Pink
FKG585



Purple
FKG584



Velvet
FKG586

Takii's Antirrhinum Variety Comparison among Series

Series	Variety	Plant Height	Flower Size	
			cm	inch
Legend	Light Pink	B	4.0	1.5
	Light Yellow	B	4.0	1.5
	Pink	B	4.0	1.5
	White	B	4.0	1.5
	Yellow	B	4.0	1.5
	White Imp.	A	4.5	1.75
Chantilly	Yellow Imp.	A	4.5	1.75
	Bronze	A	5.0	2.0
	Cream Yellow	B	5.0	2.0
	Deep Orange	C	5.0	2.0
	Light Pink	B	5.0	2.0
	Light Salmon	A	5.0	2.0
	Pink	B	5.0	2.0
	Purple	B	5.0	2.0
	Velvet	B	5.0	2.0
	White	C	5.0	2.0
	Yellow	B	5.0	2.0

The data is based on trial results in Nagano prefecture, Japan. No pinching, set at 8°C/46°F during night

Taller A
Shorter C

The above data is based on trials completed in Japan. Actual results are dependent upon environmental conditions and local practices that may affect variety characteristics and performance.



White
FKG591



Yellow
FKG588

F1 Crane™ series

Brassica oleracea

20-25°C / 68-77°F 4-5 days



Ruffle leaved type

- New fringed type in Crane series
- Vigorous plant habit, growers can easily secure plant height
- *Bicolor is slightly shorter than the other colours

Feather leaved type

- Cut flower Brassica with feathery leaves
- Feather Queen and Feather King have a very uniform, upright habit and complement each other very well

Round leaved type

- Winter bouquets are much more charming with the round shape, varied colours and long-lasting vase life of the Crane series
- Genetically, the flower head was bred to be compact; however, plant spacing will determine the size of the flower as well
- Crane Carmine, Pink, Red and White have a very uniform, upright habit and complement each other very well

Ruffle



Ruffle Bicolor
FHB697



Ruffle Red
FHB696



Ruffle Rose
FHB695



Ruffle White
FHB694



Feather



Feather King
FHB703



Feather Queen
FHB702



Arrange Green
Green feathery leaves are suitable for filler materials in bouquets and flower arrangements



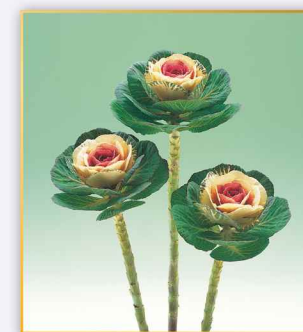
Unique cut leaves accentuate flower arrangement

Round

Takii's Brassica Variety Comparison among Cut Flower types

Variety	Plant Height
Crane Ruffle Bicolor	3
Crane Ruffle Red	5
Crane Ruffle Rose	3
Crane Ruffle White	4
Crane Feather King	3
Crane Feather Queen	2.5
Crane Bicolor	2.5
Crane Carmine	4
Crane Pink	2.5
Crane Red	2
Crane Rose	2
Crane White	3
Flare Rose	4
Flare White	5
Lucir Rose	2.5
Lucir White	3

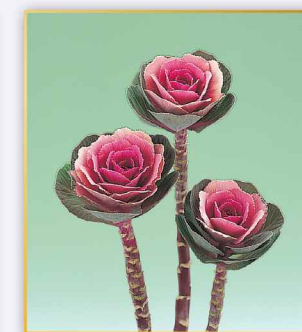
1 → 5
Shorter → Taller



Bicolor
FHB701



Carmine
FHB686



Pink
FHB690



Red
FHB684



Rose
FHB685



White
FHB652

F1 Flare™ series

Brassica oleracea

20-25°C / 68-77°F 4-5 days



- Very early maturity and easy to get tall stem
- Flare Rose and Flare White have very uniform, wavy leaves, upright habit
- Flare White has such a pure white colour that is also well suited for dyeing



F1 Flare Rose with blue dye. After dyeing, Flare Rose presents a charming vintage look



Rose
FHB693



White
FHB692



A new style arrangement of Flowering Kale with F1 Flare White. By trimming outer green leaves and having only pure white leaves remaining, a flawless and clean effect overturns our typical image of Flowering Kale

F1 Lucir™ series

Brassica oleracea

20-25°C / 68-77°F 4-5 days



- A very unique Brassica which has glossy green leaves
- In comparison to existing Brassica, the waxless glossy leaves of this Brassica show better colour contrast of the centre colouring

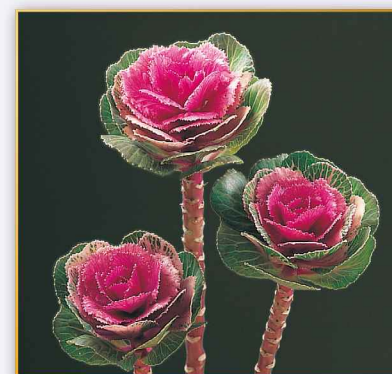


The stunning Lucir Rose blended with the ever-popular rose brings beautiful colour, texture and lasting abilities in floral designs



Left: F1 Lucir Right: F1 Crane

Lucir has glossy green leaves



Rose
FHB711



Can be a pot plant with PGR



White
FHB712



Can be a pot plant with PGR

Star™ series

Calendula officinalis

Dark required 21-24°C / 70-75°F 8-10 days



- Highly valued for cut flower use with tall, sturdy stems and large double flowers
- The Star series is bred with special attention to higher disease resistance and good productivity



Gold
FKN201



Orange
FKN202

NEW *Optimo™ series*
Callistephus chinensis
 15-20°C/ 59-68°F 7-10 days  70-80 cm / 28-32 inches

- Brand-new series from Callistephus
- It has large flower size with impressive colour and Fusarium tolerance
- Less basal branching and top flowering



Deep Purple
FAS591



Red
FAS592



NEW *Optimo α™ Light Blue*
Callistephus chinensis
 15-20°C/ 59-68°F 7-10 days  70-80 cm / 28-32 inches

- Unique flower shape with extra-large double flower
- Characteristics are almost same as Optimo series
- It has Fusarium tolerance



FAS593



Fujimi™ series
Callistephus chinensis
 15-20°C/ 59-68°F 6-8 days  90-100 cm / 35-39 inches

- Fujimi has three-dimensional shaped double-flowers
- Fujimi has more Fusarium resistance when compared to other varieties, resulting in reduced losses in production
- Spray type (less basal branching) plant habit and smaller leaves is suitable for dense planting



Coral Rose
FAS571



Purple
FAS573



Scarlet
FAS572

Kurenai™ series
Callistephus chinensis
 20-25°C/ 68-77°F 6-8 days  60-70 cm / 24-28 inches

- Good branching habit
- Semi-double flowers of medium size



Purple
FAS561



Red
FAS543



Rose
FAS553



White
FAS555

Nina™ series

Callistephus chinensis
■ 15-20°C/ 59-68°F ■ 6-8 days



- Nina has large numbers of small semi-double flowers on vigorous plants
- Nina series has more disease resistance when compared to other varieties, resulting in reduced losses in production
- This spray-type Callistephus is excellent for mixed bouquets



Pink
FAS381



Purple
FAS386



Salmon Pink
FAS385

NEW

Nina Plus™ series

Callistephus chinensis
■ 15-20°C/ 59-68°F ■ 7-10 days



- Strongest Fusarium resistance series within Takii's callistephus assortment
- Small semi-double flowers
- Vigorous habit with excellent flower uniformity within series



Purple
FAS391



Scarlet
FAS393



White
FAS392

Daylight™ series

Callistephus chinensis
■ 15-20°C/ 59-68°F ■ 6-8 days



- Vigorous plants produce large numbers of small single flowers
- Blue Frost and Rose Frost change petal colours from white to blue or white to rose as each flower matures which makes an attractive colour gradation on each stem
- All colours of Daylight series have Fusarium resistant



Blue Frost
FAS368



Purple
FAS374



Red
FAS372



Rose Frost
FAS367



Rose
FAS373



White
FAS369



Takii's Callistephus Variety Comparison among Series

Type	Series	Variety	Flower Size		Branching	Plant Height (cm)	Stem Strength	Fusarium Resistance	Characteristic
			cm	inch					
Large double Flowered	Optimo	Deep Purple	7.5-9	2.9-3.5	Less	75-85	Very Hard	R	Less basal branching (Upper branching)
		Red	7-9	2.9-3.5	Less	70-80	Very Hard	R	Less basal branching (Upper branching)
Extra large double Flowered	Optimo α	Light Blue	8-10	3.1-3.9	Less	75-85	Very Hard	R	Less basal branching (Upper branching)
Double Flowered	Fujimi	Coral Rose	4-5	1.6-2	Less	90-100	Very Hard	R	Less basal branching (Upper branching)
		Purple	4-5	1.6-2	Less	90-100	Hard	R	Less basal branching (Upper branching)
		Scarlet	4-5	1.6-2	Less	90-100	Very Hard	R	Less basal branching (Upper branching)
Semi double Flowered	Nina	Pink	4	1.6	Good	70-80	Hard	Non R	Hard stem. Relatively less branching
		Purple	4	1.6	Good	70-80	Hard	R	Hard stem. Good basal branching
		Salmon Pink	4	1.6	Good	70-80	Normal	Non R	Good basal branching
	Nina Plus	Purple	3	1.2	Good	65-75	Normal	R	Little early flowering in Nina Plus series
		Scarlet	3	1.2	Good	70-80	Hard	R	Top flowering
Single Flowered	Daylight	Blue Frost	2-3	0.8-1.2	Good	70-80	Hard	R	Flower colour changes from white to blue
		Purple	2-3	0.8-1.2	Good	70-80	Hard	R	
		Rose Frost	2-3	0.8-1.2	Good	65-70	Very Hard	R	
		Rose Frost	2-3	0.8-1.2	Good	70-80	Hard	R	Flower colour changes from white to rose
		Rose	2-3	0.8-1.2	Good	70-80	Hard	R	
		White	2-3	0.8-1.2	Good	70-80	Hard	R	

The above data is based on trials completed in Japan. Actual results are dependent upon environmental conditions and local practices that may affect variety characteristics and performance.

<Disclaimer>

*1. Takii's Fusarium resistant Callistephus highly restricts the growth and development of the above stated pathogen and the damage they cause under normal pathogen pressure when compared to susceptible varieties. It may, however, exhibit some disease symptoms or damage under heavy pathogen pressure.

*2. New and / or atypical strains of the specified pathogen may overcome the resistance, sometimes completely.

Kinko™ and Zanzibar™

Carthamus tinctorius
Dark required ■ 15-20°C/ 59-68°F ■ 4-6 days



- High quality cut flower item, can be harvested about 90 days after sowing
- Carthamus is sensitive for Manganese deficit. Leave fertilizing is effective to prevent this problem



Kinko
FSZB92



Zanzibar
FSZB95

Kurume™ series

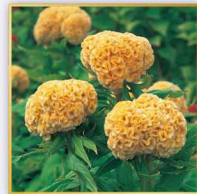
Celosia cristata
Dark required ■ 20-25°C/ 68-77°F ■ 8-10 days



- Kurume varieties are crowned with grand combs of vivid colour
- They have very high tolerance to heat, drought and disease, and are prized for summertime cut flower use
- Dense planting, spaced 10-15 cm/ 4-6 inches apart will produce smaller combs and thinner stems



Corona
FKT112



Gold
FKT113



New Scarlet
FKT122



Orange Red
FKT120



Rose
FKT116

Cannes™ series

Consolida spp.
Dark required ■ 13-18°C/ 55-64°F ■ 10-20 days



- Cannes series is disease resistant when compared to the other varieties, with much reduced losses in production
- Warm temperatures and long-day conditions induce flowering
- For harvest in winter season under short-days and cold conditions, maintaining temperatures above 10-13°C/ 50-55°F at night and providing day-length extension of 4 to 6 hours encourages better stem elongation and flower development



Blue Picotee
FTD243



Crystal Pink
FTD245



Deep Blue
FTD241



Lilac
FTD242



Purple Picotee
FTD251



Rose Stripe
FTD252



White
FTD255

F1 Aurora™ series

Delphinium elatum
Dark required ■ 15-20°C/ 59-68°F ■ 10-12 days



- Takii's F1 hybrid Aurora Delphinium's popularity continues to increase due to its outstanding performance as a cut flower as well as a garden perennial
- Excellent uniformity and quality
- Stems are very sturdy and leaves are relatively small, which make it ideal for cut flower use



Blue
FDL205



Deep Purple
FDL208



Lavender
FDL207



Light Blue
FDL211



Light Purple
FDL212



White
FDL213



Aurora can be used as garden plants or large container plants

Variety Comparison among Series

Variety	Flower Size		Plant Height	Taller	A
	cm	inch			
Blue	5.5	2.2	C	↑	B
Deep Purple	5.5	2.2	A		
Lavender	6.0	2.5	C		
Light Blue	5.5	2.2	B		
Light Purple	5.5	2.2	C		
White	6.0	2.5	C	Shorter	C

The above data is based on trials completed in Japan. Actual results are dependent upon environmental conditions and local practices that may affect variety characteristics and performance.

Seed Storage

Store seeds under dry and low temperature (approx. 5°C/40°F) condition. Storing seeds at room temperature (above 18°C/46°F) may result in very low germination.

Tips for cultivation

- Warm temperatures and long day conditions induce flowering.
- Plug finish time is 5-6 weeks. During this time, optimal growing temperatures are 15-25°C/60-78°F.
- 2-3 weeks after transplanting the flowering stems will start to elongate.
- Short day conditions will induce rosetting. When plants have fewer than 5 true leaves, temperatures below approximately 15°C/60°F will also induce rosetting.
- Under short day conditions, 4 hours of night interruption will help initiate and develop flowering.

F1 First Love™

Dianthus hybrida

21-24°C / 70-75°F 5-6 days

50-70 cm
20-28 inches

- First Love produces serrate-edged flowers changing from white to pink as the individual flowers age
- Excellent continuous flowering habit until a hard freeze
- Thin but very sturdy spray-type stems are good performers as a cut flower as well as garden plant



FND511



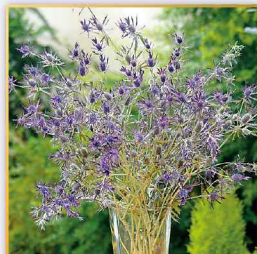
Purple Sheen™

Eryngium leavenworthii

20-25°C / 68-77°F 12-20 days

80-120 cm
32-47 inches

- Vibrant purple-crimson flowers on sturdy stems with soft bracts can be great as a vase filler
- 6-7 months from sowing to flower
- The plants prefer sunny and dry conditions



FSZA44



Audray™ series

Gomphrena globosa

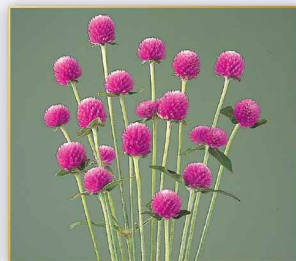
22-25°C / 72-77°F 10-12 days

80-100 cm
32-39 inches

- Audray can be used both for fresh and dried arrangements
- It is also an excellent tall garden plant that withstands hot and humid conditions



Bicolor Rose
FSE165



Pink
FSE168



Purple Red
FSE167



White
FSE173



Creative opportunities abound with Audray

F1 Sunrich™ series

Helianthus annuus

20-25°C / 68-77°F 3-4 days

90-150 cm
35-59 inches

55-70 day type

- The Sunrich series has superb quality and is maintaining its leading status in the Helianthus market
- Flowers of the Sunrich series are pollenless, long-lasting, densely petaled and have strong stems
- The series flowers in 55-70 days after sowing depending on growing conditions
- F1 Sunrich Orange DMR is the world's first Downy mildew highly-resistant variety for ornamental Helianthus
- With the introduction of F1 Sunrich Orange DMR, Helianthus production will be drastically changed. Growers have less to worry about when it comes to problems with Downy mildew. This DMR breakthrough's added-value provides substantial benefits with high yield results and the reduction of chemical use
- Resistant to multiple strains of downy mildew (*Plasmopara halstedii*)
- Plant height, growing speed as well as flower shape and colour are similar to F1 Sunrich Orange

<Disclaimer>

- *1. F1 Sunrich Orange DMR highly restricts the growth and development of the above stated pathogen and the damage they cause under normal pathogen pressure when compared to susceptible varieties. It may, however, exhibit some disease symptoms or damage under heavy pathogen pressure.
- *2. New and / or atypical strains of the specified pathogen may overcome the resistance, sometimes completely.



SUNRICH



Gold
FHM515



Lemon
FHM511



Lime
FHM521



Orange
FHM512



Orange DMR
FHM457

What is Downy Mildew (*Plasmopara halstedii*)?



Plasmopara halstedii is one of the major plant pathogens that infect *Helianthus*. The symptom shows as light yellowish-green spots on the upper side of leaves alongside main veins. It eventually grows and spreads to become a lesion, and on its underside light gray mold grows. Severely infected plants will not have ornamental value. The stems will not reach enough height and will not be good quality cut flowers.



F1 Sunrich Summer™ series

Helianthus annuus

20-25°C / 68-77°F 3-4 days



50-65 day type

- Orange Summer DMR has high resistance against Downy Mildew. Plant height, growing speed as well as flower shape and colour are similar to F1 Sunrich Orange Summer
- Limoncello Summer presents a stable bicolour of vibrant yellow transitioning to a light, creamy yellow at the tips. This uniqueness brings a great accent to the Helianthus market
- F1 Sunrich Orange Summer and Lemon Summer flower 5 to 10 days earlier than F1 Sunrich Orange and Lemon, but the flower shapes and colours are identical to Sunrich Orange and Lemon, respectively
- Suitable for spring to summer cultivation with sowing and growing under long-day conditions



Lemon Summer
FHM501



Limoncello Summer
FHM456



Orange Summer
FHM520



Provence Summer
FHM459



Orange Summer DMR
FHM462

F1 Premier™ series

Helianthus annuus

20-25°C / 68-77°F 3-4 days



45-55 day type

- Premier series is a non-branching F1 hybrid pollenless Helianthus
- Premier is extra-early offering a very short crop time of approximately 45-55 days from sowing with excellent uniformity
- Sowing is recommended under long day conditions for early summer harvest to secure enough stem length



Lemon
FHM517



Light Yellow
FHM513



Orange
FHM455

F1 Marley™

Helianthus annuus

20-25°C / 68-77°F 3-4 days



- Marley has unique colour combination of cream and purple
- Good plant height
- Genetically some colour variation



FHM461



F1 Ziggy™

Helianthus annuus

20-25°C / 68-77°F 3-4 days



- Compared to Marley,
 - colour combination of yellow and brown
 - less side-shooting
 - 3-5 days late flowering
- Under warmer and strong light intensity condition, colour might be deeper
- Genetically some colour variation



FHM464



F1 Full Sun Improved™

Helianthus annuus

20-25°C / 68-77°F 4-6 days

120-200 cm
47-79 inches

55-100 day type

- It can have sufficient stem length even under short-day conditions in the temperate climate area
- It is preferable to have 18°C / 65°F at the lowest temperature for growth
- Depending on conditions such as low temperatures, the culture time can be even longer than the stated 55-100 days



FHMA13

Taki's Helianthus Characteristics of the cut varieties

Variety	Petal	Disk	Days to bloom	Remark
F1 Sunrich Gold	Orange	Green	55-70 days	The quality standard in the market
F1 Sunrich Lemon	Yellow	Black		
F1 Sunrich Lime	Yellow	Green		
F1 Sunrich Orange	Orange	Black	50-65 days	5-10 days earlier than Sunrich Orange
F1 Sunrich Orange DMR	Orange	Black		
F1 Sunrich Lemon Summer	Yellow	Black		
F1 Sunrich Limoncello Summer	Lemon with yellow base	Black	50-65 days	Downy mildew highly-resistant.
F1 Sunrich Orange Summer	Orange	Black		
F1 Sunrich Provence Summer	Deep Orange	Black		
F1 Sunrich Summer Orange DMR	Orange	Black	50-65 days	Downy mildew highly-resistance.
F1 Premier Lemon	Yellow	Black	45-55 days	Extra-early varieties
F1 Premier Light Yellow	Light Yellow	Black		
F1 Premier Orange	Orange	Black		
F1 Marley	Cream/Purple bicolour	Black	45-70	Early flowering under short-day condition.
F1 Ziggy	Yellow/Brown bicolour	Black	45-70	Compare to Marley, 3-5 days late flowering.
F1 Full Sun Improved	Dark Yellow	Black	55-100 days	Sufficient stem length even under short day conditions

The above data is based on trials completed in Japan. Actual results are dependent upon environmental conditions and local practices that may affect variety characteristics and performance.

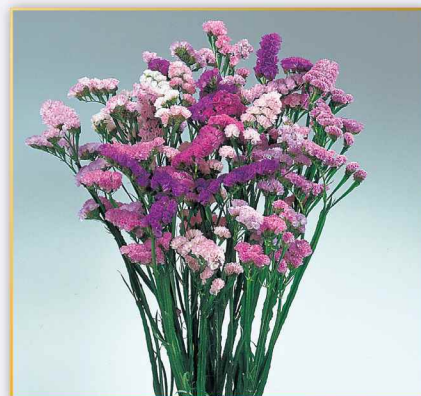
Pastel Shades™

Limonium sinuatum

15-20°C / 59-68°F 10-15 days

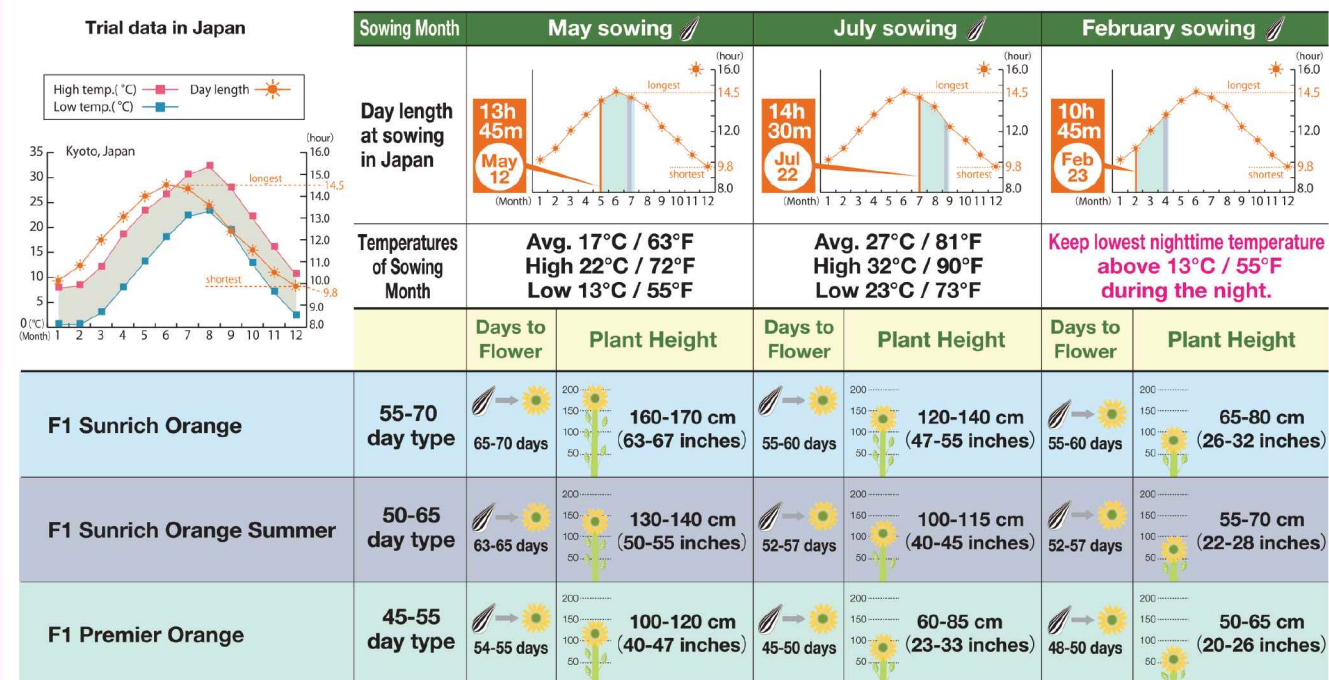
70-80 cm
28-32 inches

- Pastel Shades is an early-flowering variety of Limonium (Statice)
- Long-lasting as a fresh cut flower, Pastel Shades is also excellent when used dried in arrangements



FSU260

1: Effects of day length and temperature on plant height and days to flower



All information is based on trials completed in Japan. Actual results are dependent upon environmental conditions and local practices that may affect variety characteristics and performance.

2: Proper varietal cultivation

- Day length and light intensity are factors that influence the stem length of the Sunrich and Premier series.
- Long-day cultivation will produce longer stems, short-day cultivation will result in shorter stems.
- If F1 Sunrich Orange (55-70 day type) grows too tall, F1 Sunrich Orange Summer (50-65 day type) may present a better choice as its plant height is 15%-20% shorter.
- F1 Sunrich Orange Summer (50-65 day type) can save approximately 5-10 days in cultivation time over F1 Sunrich Orange.
- The F1 Premier series (45-55 day type) offers a very short crop time. Sowing is recommended under long-day conditions for an early summer harvest to yield sufficient cut stem length.
- For the F1 Premier series, short-day conditions at the sowing and young plant stage may result in insufficient height for cut flower use.

Cultivation Information for Cut Varieties

Sowing

Germination temperature: 20-25°C / 68-77°F

Days to emergence: 3-4 days (7-10 days under 15°C / 60°F conditions)

pH: 5.5-6.5

Growing

Growing temperature: above 15°C / 60°F at night and under 35°C / 95°F during the day

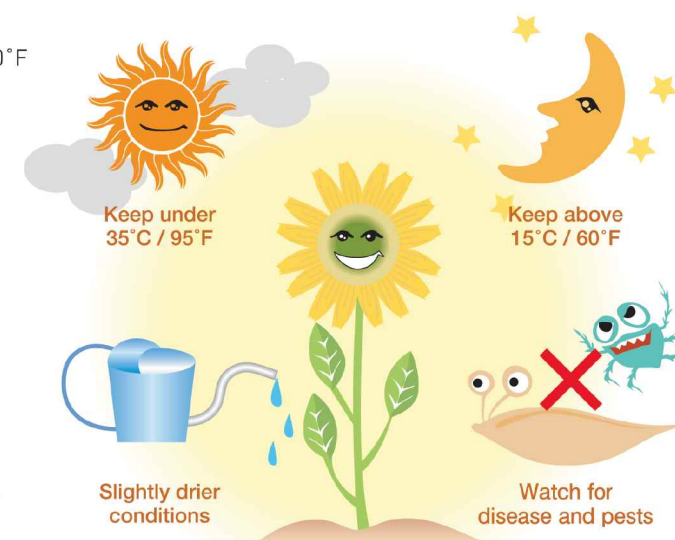
Irrigation: Slightly drier conditions are preferable

Fertilization: Provide sufficient fertilization to avoid yellowing of bottom leaves

Common Problems

Insects: Aphids, caterpillars, mites, slugs

Diseases: Downy mildew, gray mold, leaf spot, powdery mildew, sclerotinia rot



F1 Corelli™ series

Flower Earliness	Flower Size
I-III*	Large

* See the below grouping

Eustoma grandiflorum

Light required ■ 15-20°C/ 59-68°F ■ 20-25 days

- Corelli has excellent large, double flowers with elegant fringed, curly petals
- Along with large flower buds it has an elegant yet playful appearance, and can create a classical ambience
- Top branching, superb for bouquet usage and excellent vase life



*Taki's Lisianthus is classified into four groups according to earliness of flowering.

Group
I : Early
II : Middle
III : Mid-Late
IV : Late



I Pink
FRS882

II Light Pink
FRS872

III Apricot
FRS766

III Light Pink
FRS764



III Peach
FRS756

III Rose
FRS762

I White
FRS881

II White
FRS871



II Lavender
FRS874

III Blue Imp.
FRS753

III Lavender
FRS754

F1 Corelli Sugoi™ series

Flower Earliness	Flower Size
I, III*	Large

* See page 71

Eustoma grandiflorum

Light required ■ 15-20°C/ 59-68°F ■ 20-25 days

- New series from Corelli brand. "Sugoi" means "Wow!" "Awesome!" in Japanese
- As it's name "Sugoi", it has remarkable strong fringe and high number of petals with combination of extra large size flower
- This gorgeous flower provides great impact for bouquet
- Takii will fill this series with more colours in near future



I Light Lavender
FRS898

III Yellow
FRS755

Variety Comparison among Corelli

	Variety Name	Flower Size		Branching	Plant Height	Stem Strength	Characteristic
		cm	inch				
Double Flowered with fringed	F1 Corelli I Pink	8.5	3.4	Normal	Medium	Normal	Large flower with green center.
	F1 Corelli II Light Pink	8.5	3.4	Good	Medium	Very Hard	Stable flower colour and thick petals.
	F1 Corelli III Apricot	8.5	3.4	Good	Tall	Hard	Highest number of petal and stable doubleness within Corelli series.
	F1 Corelli III Light Pink	8.5	3.4	Good	Very Tall	Normal	Fringe is less compared to other colours in this series.
	F1 Corelli III Peach	9.0	3.6	Good	Tall	Hard	Stable number of petals and fringe.
	F1 Corelli III Rose	8.0	3.2	Good	Tall	Very Hard	Thick petal with good transportability.
	F1 Corelli I White	8.0	3.2	Very Good	Short	Normal	Stable flower shape. Pure white colour under low temperature condition.
	F1 Corelli II White	8.5	3.4	Good	Medium	Hard	Large flower with stable fringed flower petals.
	F1 Corelli II Lavender	8.5	3.4	Good	Short	Hard	Strong stable fringed flower. Deeper Lavender under cooler condition.
	F1 Corelli III Blue Imp.	8.0	3.2	Good	Tall	Normal	Stable flower shape with deeper blue colour (True Blue).
	F1 Corelli III Lavender	7-8	2.8-3.2	Good	Tall	Hard	Taller plant height, stronger stem within lavender colour varieties.
	F1 Corelli Sugoi I Light Lavender	8.0	3.2	Good	Short	Normal	Strongest fringed petal within Corelli series. Thick petals and high number of petals.
	F1 Corelli Sugoi III Yellow	8.0	3.2	Normal	Medium	Normal	Strong fringed and great number of petals. Great flowering uniformity.

The above data is based on trials completed in Japan. Actual results are dependent upon environmental conditions and local practices that may affect variety characteristics and performance.
Short 60-70cm Medium 70-80cm Tall 80-110cm Very Tall over110cm

F1 Arena™ series

Flower Earliness	Flower Size
I~IV*	Large

* See page 71

Eustoma grandiflorum

Light required ■ 15-20°C / 59-68°F ■ 20-25 days



- Introducing new colours every year, the Arena series now totals 22 varieties, giving more choices for growers, florists and consumers
- Selected for its high quality and fully double flowers on strong and sturdy stems
- New Arena III White has very vigorous plant habit with extremely large flower
- Arena III Pink may have less doubleness under high temperature conditions during flower bud formation stage



I Light Pink Imp.
FRS896



III Apricot
FRS724



III Baby Pink
FRS674



III Champagne
FRS708



III Clear Pink
FRS729



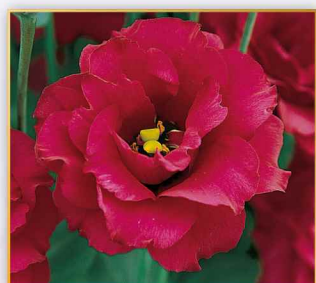
III Hot Pink
FRS727



III Pink
FRS702



III Pink Flash
FRS725



III Red
FRS741



IV Rose
FRS705



III Gold
FRS732



III Green
FRS728



I Pure White
FRS895



I White
FRS894



II Kilimanjaro
FRS784



II White
FRS781



III White
FRS752



IV White
FRS731



I Purple
FRS897



II Purple Picotee
FRS873



III Blue Picotee
FRS723



III Purple
FRS892

Variety Comparison among Arena

Variety Name	Flower Size		Branching	Plant Height	Stem Strength	Characteristic
	cm	inch				
F1 Arena I Light Pink Imp.	8.0	3.2	Good	Short	Hard	More number of petals and early flowering than Arena I Light Pink
F1 Arena III Apricot	8.0	3.2	Good	Tall	Hard	Unique colour of flower
F1 Arena III Baby Pink	8.0	3.2	Good	Medium	Hard	Wavy, thick petals with good transportability
F1 Arena III Champagne	8.0	3.2	Good	Medium	Hard	Large flowers with many petals
F1 Arena III Clear Pink	8.0	3.2	Good	Tall	Hard	Flower buds shape is like peony
F1 Arena III Hot Pink	8.5	3.4	Good	Tall	Hard	Deep Pink. Stable doubleness under high temperature
F1 Arena III Pink	8.0	3.2	Good	Tall	Hard	Bright pink under fluorescent light
F1 Arena III Pink Flash	8.0	3.2	Good	Tall	Very Hard	Sturdy stem with high quality flower
F1 Arena III Red	6.0	2.4	Good	Tall	Hard	Vivid red, Unusual colour for Eustoma
F1 Arena IV Rose	7.0	2.8	Good	Very Tall	Very Hard	Suitable for season when it gets difficult to secure enough stem length
F1 Arena III Gold	8.0	3.2	Good	Tall	Hard	High performance with its yellow gold flower
F1 Arena III Green	7.5	3.0	Excellent	Medium	Hard	Nice thick flower petal, good sturdy stem
F1 Arena I Pure White	8	3.2	Good	Medium	Hard	High stable doubleness. Very easy to grow
F1 Arena I White	7.5	3	Good	Tall	Normal	Good flower shape and easy to get long stem
F1 Arena II Kilimanjaro	8.0	3.2	Excellent	Tall	Very Hard	Abundant flower under strong sunlight
F1 Arena II White	8.0	3.2	Good	Medium	Very Hard	Excellent flower shape, Strong stem
F1 Arena III White	10	3.9	Less	Tall	Hard	Very vigorous growth with extremely large flower
F1 Arena IV White	8.0	3.2	Good	Very Tall	Very Hard	Long stems suitable for cultivation under high temperatures and strong light intensity
F1 Arena I Purple	8.5	3.4	Good	Medium	Hard	Easy to get long stem and good branching
F1 Arena II Purple Picotee	8.0	3.2	Good	Medium	Normal	Picotee edge is vivid and stable
F1 Arena III Blue Picotee	7.5	3.0	Good	Tall	Very Hard	Thick petal and top flowering type
F1 Arena III Purple	7.0	2.8	Good	Medium	Hard	Curly, thick petals with deep purple colour

The above data is based on trials completed in Japan. Actual results are dependent upon environmental conditions and local practices that may affect variety characteristics and performance.
Short 60-70cm Medium 70-80cm Tall 80-110cm Very Tall over110cm

F1 Croma™ series

Flower Earliness	Flower Size
II~IV*	Middle

* See page 71

Eustoma grandiflorum

Light required ■ 15-20°C/ 59-68°F ■ 20-25 days

- Croma's thick, strong petals and extra-double flowers set it apart as a premium variety. Due to the strength of the flowers and stems, it is well suited for cold chain shipping
- Croma is attractive to florists with its versatility in arrangements along with its high consumer appeal
- IV Lavender Imp. is later flowering and with higher plant height than IV Lavender
- New Croma II Purple has deep purple colour with unique dark flower buds



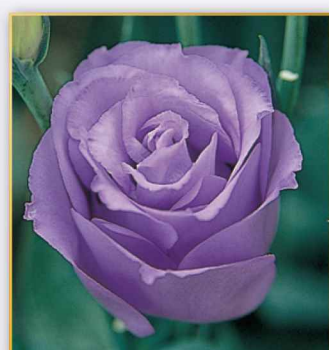
II Purple
FRS876



III Blue Picotee
FRS802



III Blue Picotee Imp.
FRS744



IV Lavender
FRS746



IV Lavender Imp.
FRS745



CROMA

■ Germination Temperature ■ Days to Emergence ■ Stem Length



III Silky White
FRS786



III White
FRS785



II Champagne
FRS875



III Pink Picotee Imp.
FRS743



III Yellow
FRS801

Variety Comparison among Croma

Variety Name	Flower Size		Branching	Plant Height	Stem Strength	Characteristic
	cm	inch				
F1 Croma II Purple	6	2.4	Good	Short	Normal	Deep purple colour with unique flower buds
F1 Croma III Blue Picotee	6.0	2.4	Excellent	Medium	Hard	Stable Picotee, high doubleness, top flowering
F1 Croma III Blue Picotee Imp.	6.0	2.4	Good	Tall	Hard	Stable picotee under high temperature condition
F1 Croma IV Lavender	6.0	2.4	Excellent	Short	Very Hard	Late variety, Very hard stem
F1 Croma IV Lavender Imp.	7.0	2.8	Excellent	Medium	Very Hard	Taller, larger flower than Croma IV Lavender
F1 Croma III Silky White	7.0	2.8	Good	Medium	Hard	Pure white. More open flower shape compared to Croma III White
F1 Croma III White	7.0	2.8	Good	Medium	Hard	Rosy flower, Excellent performance, Nice shape flower with good doubleness
F1 Croma II Champagne	6.0	2.4	Good	Medium	Normal	Stable flower colour under cold condition
F1 Croma III Pink Picotee Imp.	7.0	2.8	Good	Medium	Very Hard	Stable picotee even under cold condition
F1 Croma III Yellow	6.0	2.4	Good	Tall	Hard	High doubleness

The above data is based on trials completed in Japan. Actual results are dependent upon environmental conditions and local practices that may affect variety characteristics and performance.
Short 60-70cm Medium 70-80cm Tall 80-110cm Very Tall over110cm

F1 Jolly™ III Pink

Eustoma grandiflorum

Light required ■ 15-20°C/ 59-68°F ■ 20-25 days

- Plants produce an abundance of petite flowers with long vase life
- Very vigorous plant habit with very strong stem and flower petals

Variety Name	Flower Size		Branching	Plant Height	Stem Strength	Characteristic
	cm	inch				
Double Flowered Jolly III Pink	6.0	2.4	Excellent	Tall	Very Hard	Many flowers and vigorous plant habit

Short 60-70cm Medium 70-80cm Tall 80-110cm Very Tall over110cm



FRS806

F1 Super Magic™ series

Flower Earliness	Flower Size
I~II*	Large

* See page 71

Eustoma grandiflorum

Light required ■ 15-18°C/ 59-64°F ■ 20-25 days



- Super Magic is a double flowered mid-early series
- Top flowering habit with large sized flowers
- The wide colour assortment, including spectacular colours of Apricot and Champagne, provides a complete range for professional growers

Takii's Lisianthus flowering earliness

Arena, Croma, Corelli, Falda and Vulcan series are classified into four groups; I, II, III, IV, according to earliness of flowering.

I	II	III	IV
Early-Middle	Middle	Middle-Late	Late
Arena I	Arena II	Arena III	Arena IV
Corelli I	Croma II	Croma III	Croma IV
	Corelli II	Corelli III	
	Super Magic	Falda III	
	Advantage		
	Falda II		



Pure White
FRS135 (Formerly FRSG63)



White
FRS138 (Formerly FRSG79)



Yellow
FRS134 (Formerly FRSG62)



Apricot
FRS136 (Formerly FRSG71)



Champagne
FRS131 (Formerly FRSG53)



Rose
FRS133 (Formerly FRSG59)



Capri Blue Picotee
FRS139 (Formerly FRSH51)



Deep Blue
FRS137 (Formerly FRSG72)

Deep Blue may have less doubleness under high temperature conditions during flower bud formation stage

F1 Advantage™ series

Flower Earliness	Flower Size
II*	Middle

* See page 71

Eustoma grandiflorum

Light required ■ 15-18°C/ 59-64°F ■ 20-25 days



- Middle flowering, fully double large flower
- Thicker and stronger stems are more suitable for production under high temperature and long day conditions



Cherry Sorbet
FRSG41



Pink
FRS117 (Formerly FRSG46)



Purple
FRS115 (Formerly FRSG43)



Yellow
FRS116 (Formerly FRSG44)

F1 Falda™ series

Flower Earliness	Flower Size
II~III*	Middle

* See page 71

Eustoma grandiflorum

Light required ■ 15-20°C/ 59-68°F ■ 20-25 days

- Gorgeous with its fringed single petals
- Abundant flowers on each stem
- Uniqueness attracts florists, driving new ideas for bouquet arrangements
- Fringed flower makes voluminous bouquet, especially when many flowers are used in one vase
- Thick flower petals and sturdy stems are suitable for long transportation



II Light Apricot
FRS673



II Salmon
FRS672



III White
FRS666

Variety Comparison among Falda

	Variety Name	Flower Size		Branching	Plant Height	Stem Strength	Characteristic
		cm	inch				
Single Flowered	F1 Falda II Light Apricot	5.0	2.0	Good	Medium	Hard	Nice colour, Gorgeous in bouquet
	F1 Falda II Salmon	5.0	2.0	Good	Medium	Hard	Unique colour, Thick petal
	F1 Falda III White	5.0	2.0	Excellent	Tall	Hard	Pure white, Thick petal

The above data is based on trials completed in Japan. Actual results are dependent upon environmental conditions and local practices that may affect variety characteristics and performance.

Selectable type

- Seedlings are selectable for doubleness

Glory™ series

Matthiola incana

Dark required 18-21°C/ 64-70°F 4-5 days



- Glory series is an improvement over the Xmas series
- Uniform blooms are produced on straight and sturdy stems
- Doubles can be identified by cotyledon colour (See page 32)



Blue
FST257



Lavender
FST255



Light Purple
FST258



Pink
FST256



Rose
FST253



White
FST193

Xmas™ series

Matthiola incana

Dark required 18-21°C/ 64-70°F 4-5 days



- The non-branching gray-green leaved series produces a mass of blooms
- Xmas can be grown both in unheated glasshouses as well as outdoor field production
- Doubles can be identified by cotyledon colour (See page 32)



Apricot
FST328



Blue
FST131



Ocean
FST139



White
FST133



Pink
FST135



Rouge
FST324



Ruby
FST134

High double type

- Average of 90% double-flowering type

Canneto White™

Matthiola incana

Dark required 18-21°C/ 64-70°F 4-5 days



- Early flowering
- Approximately 7 to 10 days later than Noble series
- Dense flower spike with sturdy stem
- Hairy-leaved type



FST336



Noble™ series

Matthiola incana

Dark required 18-21°C/ 64-70°F 4-5 days



- Extra-early flowering
- The full doubleness of Noble is breathtaking
- Closely arranged florets make a massive display on a sturdy stem
- Uniform growth makes Noble the grower's choice
- Hairy-leaved type



Cream Yellow
FST318



White
FST320

F1 Sun™ series

Zinnia elegans

20-22°C/ 68-72°F 5-6 days 100-150 sd/g



- This series produces masses of large, fully double flowers
- Sun series blooms 60-70 days after sowing



Cherry
FZN642



Gold
FZN641



Red
FZN651



Sunshine Mix
FZN652

Terms and Conditions of Sale

1. DELIVERY

Unless otherwise agreed in advance, seller will endeavour to deliver the goods by the way which seller deems to be best. The seller will not take responsibility for any delay or loss after the goods have left seller's warehouse or stock depot.

2. USE OF SEED

All the seed is sold for the purpose of horticultural and/or agricultural crop only. It is expressly forbidden to use the seeds for multiplication or reproduction purposes.

No responsibility whatsoever, will be accepted for any seeds reproduced.

3. DELIVERY DUTY

Advanced orders for the seeds where seed crops have not yet been received by the seller are booked subject to the restriction of an average yield of standard germinating seeds and quality standards. Should the yield be lower than average, the seller has the right to deliver pro rata or will be dismissed from his delivery duty in case of total crop failure.

4. PROPERTY RIGHT

The seller remains an owner of the goods until the time full payment has been made.

5. COMPLAINTS

Any claims for quantity and appearance of seeds shall be submitted within 6 working days from the receipt of the seeds.

Any claims for the contents of invoice shall be submitted within 6 working days from the receipt of the seeds.

Any claims for germination and physical purity have to be submitted within 30 days from the receipt of the seeds.

Complaints about varietal purity of the seeds supplied must be made as soon as possible, in any case, at the point of time that the crop can still be examined in the field by both parties.

No complaint can be considered unless clear proof can be given that the seed grown and alleged to have performed unsatisfactory was in fact the seed supplied by the seller and that it was sown on suitably prepared ground, including soil and any type of growing medium, treated carefully and correctly throughout and subject only to such conditions as were likely to produce a favorable crop.

6. NON PAYMENT

The seller reserves the right to withhold deliveries until all and any outstanding payments have been received and reserve a lien upon and the right to sell or otherwise dispose of all the goods for which payments have not been made.

If the buyer does not make full payment within a period agreed upon, an interest is charged at 1.5% per month.

7. SOLVENCY

Condition for the delivery duty is that the buyer has an unconditional solvency. If the seller receives before shipment, any information from a bank, credit office or any other reliable source which leads the seller to believe the buyer's solvency is at risk, the seller has the right to demand security for payment or to cancel the shipment.

8. LATENT DEFECT

Diseases of plants can be transmitted by the wind, insects, animals or by humans and may be seed borne or soil borne. It is not a condition of sale nor do we warrant that any seed sold by the seller shall be free from such a deficiency and the seller will not be responsible in any way for the resultant crop.

9. FORCE MAJEURE

The seller shall not be responsible for any delay of goods or any part thereof, caused by any act of God, action by any government, strike, lockout, combination of workers, riot or civil commotion, breakdown of machinery, power failure, fire, crop failures grown by the seller or on the seller's behalf and/or any other contingency beyond the control of the seller.

10. INSURANCE

Unless otherwise agreed upon in advance, the seller will insure the goods, at the cost of the buyer, for the damage in the transportation under the seller's open policy.

11. PRODUCT DESCRIPTIONS

Descriptions, illustrations and/or photographs shown in catalogues, leaflets and/or any other documents are based upon the results obtained under favorable conditions. Identical results are not guaranteed nor implied for all growing conditions.

12. DISEASE AND/OR PEST RESISTANCE

Resistance and susceptibility claimed by the seller in the descriptions of the varieties are based upon the results obtained under conditions and with strains (races) of pathogens available in Japan. The seller does not guarantee identical results when the seeds are grown under different conditions.

13. OTHER CONDITIONS

Conditions not stipulated in the terms and conditions of sale are subject to the International Seed Federation (ISF) Rules and Usages for the Trade in Seeds for Sowing Purpose.

Limitation of Liability

All seeds we sell are properly cleaned, dried and graded up to our international standard, and the germination and purity are tested at our laboratory before the shipment, and data of the test will be furnished when so asked.

However, in view of the nature of merchandise and in accordance with universal custom of the seed trade, WE HAVE NO WARRANTY OF MERCHANTABILITY, FITNESS FOR PURPOSE OR OTHER WARRANTY, EXPRESS OR IMPLIED.

No claim or liability shall be asserted unless the buyer or user shall have reported within a reasonable period as stipulated in clause-5 "Complaints" of terms and conditions of sale.

OUR LIABILITY IS LIMITED IN AMOUNT TO THE PURCHASE PRICE OF THE SEEDS, WHETHER ARISING FROM CONTRACT, NEGLIGENCE, WARRANTY, OR ANY OTHER CAUSE.

WE SHALL NOT BE LIABLE FOR ANY CONSEQUENTIAL OR INCIDENTAL DAMAGES.

